



LUMBINI  
BUDDHIST  
UNIVERSITY

Program Outline/Mannual

MIRPS  
Master in  
International  
Relations and  
Peace Studies



**Faculty of  
Humanities and  
Social Sciences**



## In This

Background of Faculty of Humanities and Social Sciences

Background of the Program

Mission Of International Relations and Peace Studies

Main Goals Of International Relations And Peace Studies

Strategic Priorities

Academic Plan for The Master In International Relations And Peace Studies

Program Objectives

Learning Outcomes

Program Policies and Requirements

CREDIT HOURS

International Accreditation and Recognition

DELIVERY MODE AND EVALUATION METHODS

Student Entry Criteria

Entrance Examination for Foreign Students

Duration of the course

Medium of Instruction

Teaching Methodology

Attendance

Examination

Award

Student's Enrollment Plan for Academic Years

Practical Orientation of the Program

Academic Adviser and Research Supervisor

General Outline

Possible Fee Structure



### Background of Faculty of Humanities and Social Sciences

The Faculty of Humanities and Social Sciences (FHSS) a Faculty of Lumbini Buddhist University is in Butwal, Rupendehi District, Nepal.

The Faculty is established with the aim to impart education and practical skills in theoretical and applied areas of humanities, and social science as well as connecting Buddhism to humanities and social science as an interdisciplinary study.

Faculty of Humanities and Social Sciences at Lumbini Buddhist University has been offering its programs from its inception in diverse subject areas such as Bachelor of Arts and Bachelor of Legislative Law, MA in Archeology and Buddhist Archeological Sites, Bachelor of Travel and Tourism Management, MA in Museology and Buddhist Collection, PGD in Archeology and Buddhist Archeological Sites, Cultural and Heritage Conservation, and Bachelor in Rural Development.

Guided by the vision to enhance students' intellectual horizons and practical commitments, the Faculty of Humanities and Social Science is committed to constantly exploring creative ways of further developing its academic offer and expanding student exchanges and internship programs.

Consistent with the University's mission to enhance educational standards, the faculty is working to establish cooperation and partnership with renowned international Universities and higher education institutions.

Cooperation with partner universities represents an asset to promoting the mobility of faculty members and students, carrying out joint research projects, and promoting the sharing of best practices and innovative ideas for the overall benefit of the University's teaching and learning community.



## Background



### Background of the Program

The founding principle of LBU is to educate the People of Nepal and enrich the global learning community through the application of core Buddhist values and promote World Peace in Nepal. The Master In International Relations And Peace Studies (MA-IRPS), an interdisciplinary program, aims to educate youths who can contribute to the realization of this spirit. It offers an intensive curriculum and a roster of independent, in-depth and high-quality research activities to a new generation of scholars and students. The program's overarching aim is to construct an academic community and network of scholars, analysts, policymakers, and activists who not only critically observe global politics but also generate creative and innovative ideas as well as policies for global peace and the betterment of humankind. Generating an alternative approach to international relations and peace studies based on Buddhist philosophy – which can be an important element of Nepal's soft power – is the top academic priority of the program.

## Mission

### Mission of International Relations and Peace Studies

Master In International Relations And Peace Studies aims at strengthening the University's capacities in learning, teaching, and research in the field of humanities and social sciences by promoting the development of the students and of their competencies by fostering critical thinking skills, enhancing students' creativity, preparing them for professional careers and exposing them to an integrated approach of the relevant social, economic, political and cultural components of the human development. As an interdisciplinary study, this program IRPS will explore the connectivity among Buddhism, International Relations Theories, and Implications, Promoting Peace Studies, and Practices.

The program aims to implement these purposes by pursuing specific core strengths, which are: scholarship, creativity, academic freedom and accountability, creation and dissemination of new knowledge, social and cultural relevance, diversity, and flexibility across the disciplines. These core strengths find full application in an environment that is culturally diverse, respectful of diversity and human dignity, and inclusive of all individual and collective efforts.

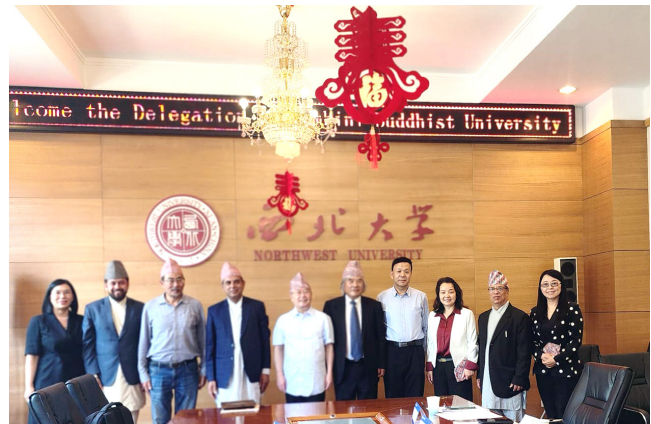


## Main Goals

### Main Goals Of International Relations And Peace Studies

The program's main goals are to train and nurture professionals in the fields of global peace, conflict resolution, international political economy, and security studies. It aims to serve both academic and professional needs to enhance the critical understanding of pressing global issues and to equip students, activists, and policy makers with deep conceptual and theoretical knowledge as well as advance methodological skills and professional integrity in the areas of study. It particularly emphasizes the production of original, organized, creative, and innovative knowledge, ideas, and policies for global peace and prosperity from the birthplace of Lord Buddha, Lumbini. Main goals include:

- I. Providing higher education to enhance the capabilities of the youths.
- II. Offering graduate academic programs that are practical and job oriented and provide knowledge and skills to address contemporary social problems of our societies.
- III. Providing professional programs with international standards in cooperation with internationally recognized higher education institutions.
- IV. Developing students with the capability to critically reflect on the issues which contemporary Nepal as a society is facing through enhancing their ability to read, critically assess and interpret ideas from many sources and expressed in many cultural idioms.
- V. Training and preparing well skilled and competent Humanities students to serve the society with mindful leadership.
- VI. Develop highly qualified professionals, competent leaders with effective management skills, academic social workers, enthusiast researchers and academicians who can work



in various social fields and master theoretical and practical knowledge in various relevant subjects.

- VII. Producing outstanding teaching and research outputs in the Humanities by employing the best possible academics, supporting staff, and ensure retention and development of highly committed and professional staff.
- VIII. Increasing the visibility of staff research in the university and wider scientific community.
- IX. Fostering connections between theory and application within and across disciplines by improving close collaborations with business, legal, cultural, government and nongovernment institutions.



## **MASTER IN INTERNATIONAL RELATIONS AND PEACE STUDIES (MA-IRPS)**

The International Relations and Peace Studies (MA-IRPS) integrates international relations and peace studies research with regional expertise in South Asia and the wider Asian neighborhood, Central and East Asia, and the Middle East. Attention is paid to the evolving role of the Asia, EU, Russia, China, and the US in international affairs, the rise of new powers, and the role of non-state actors in world politics and the global economy followed by Peace Studies and peacekeeping approaches with core Buddhist values of peace and governance. The International Relations and Peace Studies (MA-IRPS) combines international relations theory, international political economy, and security studies with multidisciplinary approaches such as peace studies, and Buddhism to the study of transnational, national, and sub-national politics.

This highly competitive program provides an enriching environment that generates research on relevant topics in a globalizing world. A multidisciplinary faculty (including scholars from international relations, peace studies, Western and Eastern philosophy, Buddhist Philosophy, history, law, economics, political science, and political geography) and a broad scope of course offerings attract top-level graduate students from around the world.

Interest in, and respect for, cultural, national, and religious diversity are highly valued at our program, which has one of the most diverse faculty and student community at International Relations and Peace Studies (MA-IRPS). We encourage our students to think of international relations scholarship as a historically and culturally contingent practice and to enter the classroom prepared to contribute to an ongoing conversation about international relations and peace studies. Above all, the program is committed to educating a new generation of professionals in the region who will help ensure peace and stability in Nepal and beyond.

The Master of Arts (M.A) at Lumbini Buddhist University in International Relations and Peace Studies is a 2-year (4 Semesters) program that combines graduate level seminars with extensive research at the end of each semester. First, second and third semester will carry 15 credits for each semester out of which 2 credits are separated for the research seminar. In the fourth semester thesis writing is compulsory and the whole semester is for thesis writing. Students will prepare thesis proposals by the end of the third semester.

The program is intended for students who have graduated from an undergraduate program and would like to proceed with their studies more thoroughly, possibly with a view to preparing themselves for a doctoral degree.

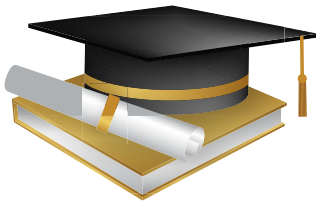
The two-year MA Program in International Relations and Peace Studies combines rigorous theoretical and methodological academic training in international relations and peace studies with area expertise.

## Strategic Priorities

- Through bilateral and multilateral interactions protect and promote Nepalese national interests and values
- Conduct and coordinate Nepal's international relations and promote its foreign policy objectives.
- Monitor international developments and advise the government on foreign policy and related domestic matters.
- Protect Nepal's sovereignty and territorial integrity.
- Contribute to the formulation of international law and enhance respect for the provisions thereof.
- Promote multilateralism to secure a rules-based international system.
- Maintain a modern, effective, and excellence-driven department.



- Provide consular services to Nepalese nationals abroad.
- Contribute to domestic and international peacekeeping processes.
- Initiate peacekeeping and maintaining strategies for the government and international stakeholders.
- Provide a world-class and uniquely Nepalese State Protocol service.



## Academic Plan

### Master In International Relations And Peace Studies

Lumbini Buddhist University was established by the Government of Nepal with the vision to serve and reach the local and international community by extending and expanding the benefits of higher education with the highest standards.



The University is dedicated to becoming a source and center of Academic Excellence in learning, teaching, and research activities, in both fundamental and applied fields. Its aim is to educate and develop skilled and qualified students who are prepared to assume responsible positions in society and actively contribute to national development. Lumbini Buddhist University's main concern is to make academic education responsive to the needs of both the students and the job market. To pursue this goal, the academic programs offered by each faculty are tailored to meet the aspirations of individual students, as well as to prepare them to cope with the challenges raised by emerging professions and the necessary skills and competencies demanded by employers.

Moreover, to be as close as possible to the requests and new trends of the job market, the University constantly works to establish solid and fruitful partnerships with various stakeholders of the industry and business arena, as well as government and non-governmental organizations.

## Program Objectives

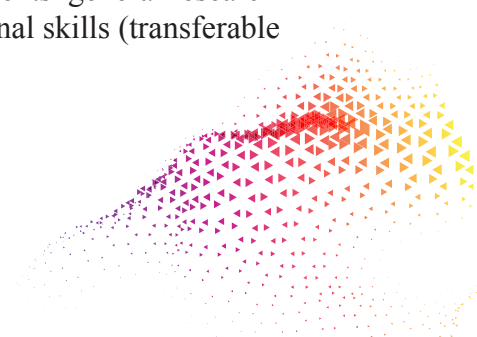
MA in International Relations and Peace Studies provides you with the ideal opportunity to gain insight into global politics and regional studies, peacekeeping theories, and approaches to enhance global career perspective and to become part of an exciting network of international relations and peacekeeping experts while staying on the job. We educate for success in challenging positions in government, international organizations, NGOs, consulting, academia, and the media.

MA in International Relations and Peace Studies offers a holistic educational approach, expertise in relevant knowledge fields, management of your competencies, and honing of soft and intercultural skills.

- To prepare and develop graduates for a career in departments of government, politics, international relations, Governmental Organizations, Non-Governmental Organizations journalism, Peace Keeping Missions, and business.
- To develop students' intellectual capabilities of analysis and interpretation, critical evaluation, selection and synthesis, reasoned argument, research, and problem-solving
- To provide students with a research-active teaching environment that gives them an appropriate grounding in the

study of international relations and peace, including its political, social, and economic aspects.

- To examine how state, non-state, and supra-national actors behave and interact through a dynamic appreciation of different levels of analysis.
- To ensure that students acquire a solid understanding of methodologies for the study of international and national processes.
- To ensure that students acquire a solid knowledge of theories of international relations and peace, the heritage and development of the discipline, its major debates, its inherent nature as an interdisciplinary study, and a critical appreciation of the essentially contested nature of politics in general and international relations in particular.
- To ensure that students acquire an advanced understanding of the relationship between theoretical, methodological, and empirical content of the issue areas studied.
- To develop students' general research skills and personal skills (transferable skills).





## Learning Outcomes

The program expects its students to be able to demonstrate the following learning outcomes. Students are expected to demonstrate:

1. Demonstrate a broad and deep understanding of international relations and peace studies.

- Know the major analytical and theoretical frameworks regarding international relations employed in political science and related disciplines.
- Understand international institutions and forces that drive behavior in international relations and mutual peace for growth.
- Connect Buddhist Philosophy to international affairs and peacekeeping activities.

2. Possess the skills necessary to think critically and communicate effectively about international relations and peace.

- Communicate ideas through written argument.
- Use evidence to critically analyze ideas or policies.

3. Value active citizenship and a just society

- Appreciate the rights and responsibilities of global citizenship.
- Recognize issues of social justice in global contexts

## Program Policies and Requirements

The following program policies and requirements play a great role and will thus be fully adhered to maintain the essentials of the code of conduct and mode of behavior among students in the study program:

### i. Academic Integrity

Students are expected to adhere to the highest ethical standards of honesty. Any violation of integrity will form the ground for the violator student's immediate failure in the course and the referral of the involved student(s) for possible removal from the MA-IRPS program.

### ii. Students with Special Needs

LBU does not discriminate against individuals with disabilities. Any student who feels he/she may need accommodation based on the impact of a disability is invited to contact the Dean of the Faculty of Humanities and Sciences for needed and possible support.

### iii. Professional Impression

Students shall be concerned with the professional impression in the classroom setting, inside the University, and while

representing the University in different events and occasions.

### iv. Plagiarism

Plagiarism is considered a very serious offense in academic programs. Any written work such as an assignment submitted by students and that bears their name is presumed to be her/his/their original work. If students use material(s) derived from any source(s) except their own work, it/they must be properly cited in the work. Any evidence of cheating or plagiarism will result in a score of zero (0) on that assignment/examination, and the student(s) may be dismissed from the program.

### v. Attendance

Students are expected to attend classes regularly and punctually and to remain for the entire class period. Repeated absences, tardiness, or early departures will affect their grades. Absences will be excused at the course instructor's discretion



only for illnesses or emergencies. Excessive absences may lead to mandatory withdrawal from the course or a grade of F (failure).

#### vi. Class Participation

Students are expected to fully participate in class activities and to be respectful to one another and the classroom environment. Active participation is an essential element of the learning experience in this program. Sharing knowledge, experience, opinions, and viewpoints are crucial to creating a collaborative learning environment. Respectful participation includes listening when others talk, refraining from side conversations or other distracting behaviors, allowing for differences of opinion, and expressing one's viewpoint with civility, turning off cell phones and refraining from text messaging.



### CREDIT HOURS

1 credit hour is equal to 16 teaching hours.

Each subject consists of 3 and 2 credit hours equal to 48 and 32 teaching hours respectively.

Some essential subjects may consist of 1 credit hour, which will be equivalent to 16 teaching hours.

## International Accreditation and Recognition

### 1. International Exposures:

The program offers international exposure through the LBU's relationships with international partner universities.

### 2. Semester Exchange Opportunity:

Students have the opportunity for semester exchange starting from the 3rd semester.

Credits and semesters studied abroad will be officially recognized by Lumbini Buddhist University.

### 3. Credit Transfer to LBU:

Students are allowed to gain credits from both national and international universities. (Such Credits Must Be Achieved During the Study Period at LBU).

To transfer credits, students must inform LBU about the courses taken at other universities. LBU will assess the alignment of these courses and officially recognize the transferred credits.

Students will be given the facility to transfer their Credit to other University (national/international) as per students request.

Students from other universities who are studying the similar nature of Postgraduate/Masters program will be allowed to transfer their credits to Lumbini Buddhist University. Such credits will be assessed/recognized by the Faculty of Humanities and Social Sciences.

### 4. Credit Transfer From LBU:

Students will be given the facility to transfer their study credits gained at Lumbini Buddhist University.

# DELIVERY MODE AND EVALUATION METHODS

## MODES OF CLASSES

Classes will be conducted after 16:00 (Nepal Time)

### Alternative 1

#### Physical presence:

Ten days of mandatory physical presence of the students on the campus, where the students will be instructed on an overview of the courses, online learning techniques, and overall criteria for the classes, assignments, and evaluation.

Students will present physically for the final examinations and paper presentations.

#### Online Activities:

Mandatory, Lectures, assignments, discussions, and audiovisual learning materials will be transferred to students through online learning platforms.

Attendance and Participation will be mandatory for the entire online learning platform.

Students must be responsible for acquiring every activity related to online learning activities from the department, instructor, and related administrative units.

In case of any communication gaps with the instructor or technical issues, students must report it to the department or concerned campus.

### Alternative 2

#### Physical Presence:

#### Physical presence / Online Activities:

4 weeks of mandatory physical presence of the students on the campus, where the students will be instructed on the courses, online learning techniques, and overall criteria for the classes, assignments, and evaluation.

Students will present physically for the final examinations and paper presentations.

Mandatory, Lectures, assignments, discussions, and audiovisual learning materials will be transferred to students through physical presence / online learning platforms.

Attendance and Participation will be mandatory for the entire physical/ online learning activities.

Students must be responsible for acquiring every activity related to physical/ online learning activities from the department, instructor, and related administrative units.

In case of any communication gaps with the instructor or technical issues, students must report it to the department or concerned campus.





## PROCEDURES

### Student Entry Criteria

Completion of a four-year Bachelor degree or a three-year Bachelor's degree with at least two years relevant work experience, with a cumulative grade point average (CGPA) of 2.5 out of 4.0 or 50 per cent marks in general will be the basic criteria. In addition, securing an acceptable level of ranking in the entrance test administered to measure required competencies including language proficiency and analytical ability will be essential.

Admission takes place on a yearly basis and, to be eligible for the program, the applying candidate shall appear for a written Entrance Examination and a Personal Interview. The maximum number of MA-IRPS candidates accepted on a yearly basis is set to 20 students in each class. Acceptance into Lumbini Buddhist University is based on the Bachelor's Degree scores, past academic records, and Entrance Examination scores. Following the selection examination process, a merit list will be published based on students' past academic performance and entrance examination.

### Entrance Examination for Foreign Students

Foreign students are welcome to join the MA-IRPS program. The University encourages applications of international students and considers their presence an asset for the enhancement of the overall learning experience both during the class and behind the official

academic activities. A separate entrance test for foreign students is envisaged by the University. Entrance examinations for all foreign students will be conducted by the University.

### Duration of the course

The course shall extend over a period of two years (Four Semesters).

### Medium of Instruction

The language of instruction, supervision, and evaluation for MA-IRPS program will be English. Students are required to make presentations, submit assignments, and take examinations in English. The University will provide English courses in need, alongside the other courses of study to enable students to reach a good proficiency in English and profit the most from the classes and other academic sessions and actions.

### Teaching Methodology

The teaching methods consist of lecture sessions, discussion sessions, presentation sessions, audio-video aids, and field visits.

- **Lecture session:** The instructor will share his/her ideas, knowledge and thoughts on different topics based on course content, reading materials, articles, books as well as personal experiences.
- **Discussion session:** Students will have a chance to share ideas, experiences, and knowledge in the classroom in line with the lecture of the instructor.

- **Presentation session:** Students will make presentations on topics in respective subjects as designed by the instructor. The session aims to achieve active participation from all the students.
- **Audio-visual show:** The instructor will use appropriate photos, map, recording, music, you-tube videos, documentary films and movies for the instruction.
- **Field visit:** The instructor will conduct fieldwork in the topics of the respective subject. The fieldwork will either be held within the local area or outside as per requirement. The cost of the fieldwork will be reimbursed by the students themselves if external funding is not secured.

Grades are awarded based on a transparent and well-defined grading rubric. Feedback is provided on all assessments to facilitate continuous improvement.

### **Attendance**

Students shall have 75% of class attendance to appear in each semester exam.

### **Examination**

The examination for a course carries 100 marks, out of which the final examination carries 40 marks (40 percent), and the internal examination carries 60 marks (40 percent). The class teacher will be responsible for conducting the internal exam. The examination methods of internal examination will be:

- Internal written exam (20 percent= 20 marks)
- Home assignments: article or book review and field visits and report writing (20 percent= 20 marks)
- Classroom presentation and group discussion (20 percent= 20 marks)
- Research Seminar (10 percent= 10 marks)

Class attendance, class participation, and student self-discipline will be considered during the evaluation process of the internal examination.

A lecture session will be held on the theoretical

foundations of classroom presentation, article or book review, and debate for the purpose of internal examination. Furthermore, the classes will be held to discuss the formats and methods of the internal examination system.

### **Award**

The performance of students will be rewarded through the grading system.

Completion of the program will award a Master In International Relations And Peace Studies and will provide the ground for further studies such as M. Phil or PhD.

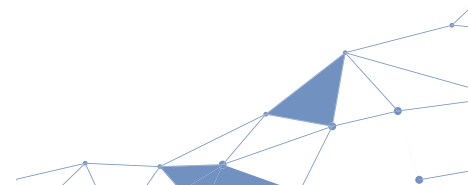
### **Student's Enrollment Plan for Academic Years**

Student's enrollment plan for master's in international relations and Peace Studies will be based on the national academic calendar, prepared, and executed by University Grants Commission. Normally, students will be enrolled once a year. University may enroll the students based on the special needs defined by the Dean Office.

### **Practical Orientation of the Program**

Each semester has a practical-oriented course encompassing a literature review-based classroom workshop. Founded on the theoretical and presentation exercises done practically under classroom situations guided by the respective course instructor, a field-based study will be conducted at the end of each semester, except the fourth one in which the mandatory research work will be given prime focus. Following instructions of course instructor and standard study module and formats the students will present the field-based study findings/outcomes in both written and oral forms for final/total evaluation.

Each of the practical workshops is different from the rest in core content. Similarly, the three practical workshop and field-based study cum seminar courses vary among themselves significantly in terms of the types of sites visited and the methodologies followed. These courses contribute greatly to making the MA-IRPS program truly interdisciplinary and practical-oriented.



## Academic Adviser and Research Supervisor

Each student will be allotted a Faculty Supervisor (FS) right at the beginning of the program. The FS, a faculty member of MA-IRPS, offers consultations to the supervisee(s) assigned to her/him/them and monitors her/him/them in all academic affairs and performances. Similarly, each student will be allotted a research supervisor prior to when the student's research work begins with a determination of the topic for research. The supervisor allotment will be based on the match between the supervisor's area of expertise and the supervisee's subject for research work.

Whereas the supervisor serves as the chief guide in the student's research work process, the research work will be evaluated in the participation of an external examiner with relevant expertise. Academic Adviser and Research Supervisor for a student could be a single faculty member or separate members depending upon the match between the expertise and the subject to be guided in research work.

## Structure and Subject for the MIRPS

### COURSE OUTLINE

1 <sup>st</sup> Semester	Theories Of International Relations	Diplomatic History of Nepal	Buddhist Approaches to International Relations	BUDDHISM And Peace Studies	Academic Writing	Research Seminar I
	3 Credits	3 Credits	3 Credits	3 Credits	2 Credits	1 Credit
2 <sup>nd</sup> Semester	Political Insurgency and Nation-Building in Nepal	Professional And Diplomatic Communications	Research Methodology	International Organization and Concept of <i>Sangha</i>	International Language	Research Seminar II
	3 Credits	3 Credits	3 Credits	3 Credits	2 Credits	1 Credit
3 <sup>rd</sup> Semester	Human Security and Peace Building	International Migration	Peace, Conflict, And Media	International Security	Research Seminar and Journal Publication III	
	3 Credits	3 Credits	3 Credits	3 Credits	3 Credits	
	OR					
Semester Abroad 15 Credits						
4 <sup>th</sup> Semester	Field Work, Data Collection, Report Writing and Presentation 15 Credits Or Dissertation 15 Credits					
	OR					
	Semester Abroad					

IRPS extends over a period of two years, and it runs on a semester system. The students may take longer to complete their thesis work and coursework; they must complete all degree requirements within four years from the start of the program. To be awarded the Master In International Relations And Peace Studies, students need to complete units of study with a total value of sixty credit points, comprising:

**TOTAL : 60 CREDITS**

## General Outline

Focus	Details
<b>Program Title</b>	MA in International Relations and Peace Studies
<b>Faculty</b>	Humanities and Social Sciences
<b>Nature</b>	Interdisciplinary (international peace research focused and connected to the faculty of Buddhist Studies)
<b>Target Students</b>	Nepalese and Foreign Students
<b>Number of Expected Students</b>	Twenty Students in One Semester • Admission: once a year
<b>Major Focus</b>	Education, Research, and Contribution
<b>Semester Design</b>	<ul style="list-style-type: none"> <li>• First: Bridge Course, Theory &amp; Background</li> <li>• Second: New Global Issues and Alternative Approaches in IR and Peace Studies</li> <li>• Third: Domestic Context, and Comparative Analysis/ International Exposures</li> <li>• Fourth: Solution &amp; Research/ International Exposures</li> </ul>
<b>Faculty Management Strategy</b>	<ul style="list-style-type: none"> <li>• Theory course by a full-time faculty member in first and second semester</li> <li>• Team teaching in the seminar classes (scholars and experts)</li> <li>• Online class for courses (Scholars around the world)</li> <li>• Research and independent study (syllabus for each independent course) in all semesters</li> <li>• Inviting scholars from MoU-signed institutions by LBU after identifying expertise.</li> </ul>
<b>Classes</b>	<ul style="list-style-type: none"> <li>• Time: Morning or Evening</li> <li>• Two classes for each course in a week (1.5 hours per session)</li> </ul>

## Fee Structure

SN	Particulars	MA-IRPS		
		1 <sup>st</sup> semester	2 <sup>nd</sup> and 3 <sup>rd</sup> Semester	4 <sup>th</sup> Semester Diisertation
1.	Entrance Fee	1,000		
2.	Admission	8,000	8,000	8,000
3.	LBU Registration	1,000	0	
4.	Tuition fee per Month	4,000	4,000	
5.	ID card	500	0	
6.	Library fee	500	500	
7.	Library Deposit	1,000	0	
8.	Examination	1,000	1,000	
9.	Midterm Exam	1,000	1,000	
10.	Student Welfare	500	500	
11.	Thesis/ Dissertation		20,000	
12.	Seminar	2,000	2,000	
13.	Orientation Program	2,500		5,000
Sub Total		23,000	17,000	33,000
Five Month Fee		20,000	20,000	
<b>Grand Total</b>		<b>43,000</b>	<b>37,000</b>	<b>33,000</b>

**Total Fee of the Program for 2080/2081 NRs. 1,50,000.00**

**Total Fee for the SAARC Students (+25%) for 2080/2081: NRs. 1,87,500.00**

**Total Fee for the International Students (+100%) for 2080/2081: NRs 300,000.00**

The fee structure is for the academic year of 2080/2081. Every year the fee structure will be increased by 15 % in case of no other decisions.



# LUMBINI BUDDHIST UNIVERSITY

**Faculty of  
Humanities and  
Social Sciences**



For admission  
[www.apply.lbu.edu.np](http://www.apply.lbu.edu.np)

## Central Office

Lumbini, Rupandehi, Nepal | [www.lbu.edu.np](http://www.lbu.edu.np)  
Tel: +977-71-404070, 404088 | E-mail: [info@lbu.edu.np](mailto:info@lbu.edu.np)

## City Campus Butwal

[www.citycampus.lbu.edu.np](http://www.citycampus.lbu.edu.np) | Nayagaun-12, Butwal, Rupandehi, Lumbini Province, Nepal  
Phone: 071-445537, Email: [citycampus@lbu.edu.np](mailto:citycampus@lbu.edu.np)

